

# NATIONAL WOMEN AND GIRLS HIV/AIDS AWARENESS DAY

MARCH 10, 2024

There were **4,444** HIV diagnoses in California in 2021.

Of those, **12%** were among **cisgender women**.

- **Black/African American and Latinx** women are disproportionately affected by HIV.
- Women **aged 25-44** had the largest proportion of new diagnoses.



## Food & Housing Insecurity

In the past 12 months...

Had difficulty paying for rent/mortgage/utilities? **54.3%**

**60%** Were worried that food would run out before getting money to buy more?

Had food purchased that did not last and there was not enough money to get more? **57.1%**

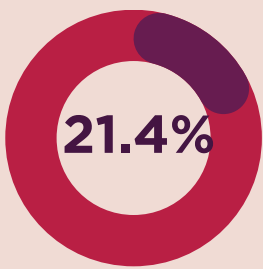
**41.4%** Had to cut the size of meals or skip meals because there wasn't enough food?

Had to move in with a friend or family member because there was no other choice? **24.1%**

**12.9%** Had a time where they were living on the streets and not sure where they would be sleeping for the night?

## HIV ART Adherence

In the past 30 days...

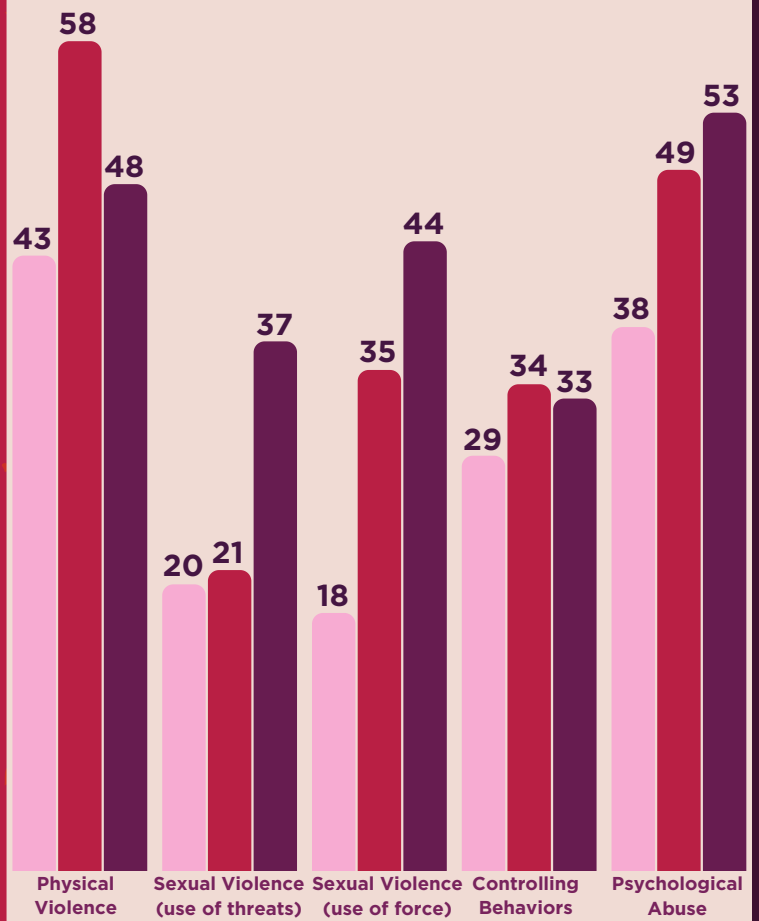


Were **less than** adherent to their HIV medication.



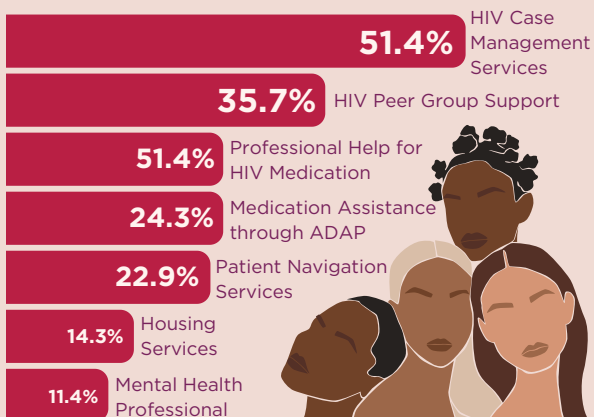
Were **frequently less than** adherent to their HIV medication.

## Women with HIV Experienced High Rates of Lifetime Violence

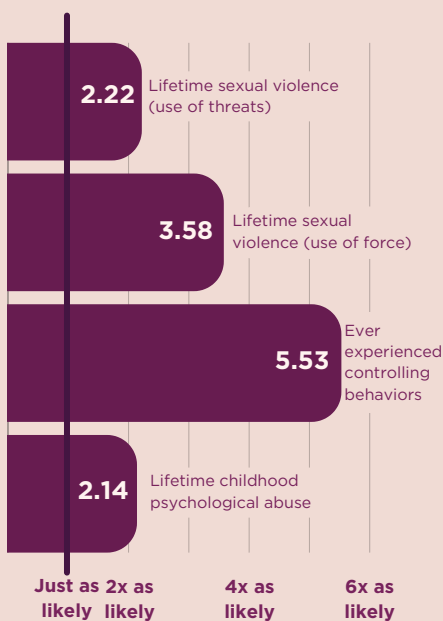


- Childhood (younger than 11 years of age)
- Adolescents (11 - 17 years of age)
- Adulthood (18 years of age or older)

## Unmet HIV Care & Other Care Needs

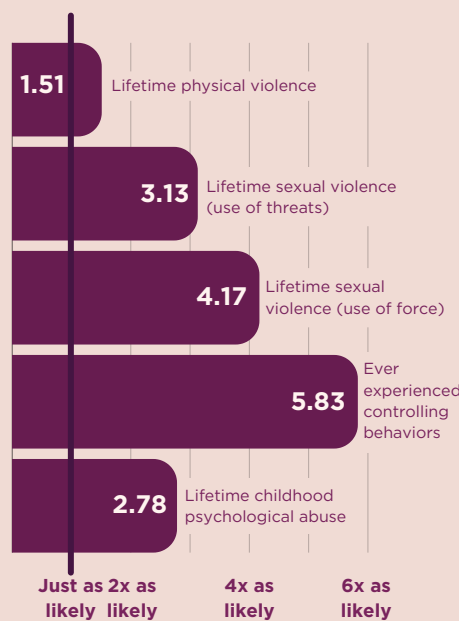


## Associations between Difficulty Paying Rent/Mortgage and Lifetime Experiences of Violence<sup>1</sup>

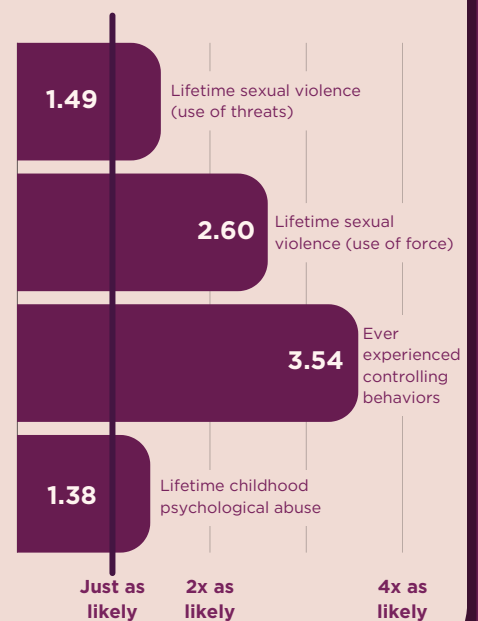


<sup>1</sup>Odds ratios not calculated for lifetime physical violence due to small cell sizes.

## Associations between Food Insecurity and Lifetime Experiences of Violence



## Associations between Insufficient Food Supply and Lifetime Experiences of Violence<sup>1</sup>



<sup>1</sup>Odds ratios not calculated for lifetime physical violence due to small cell sizes.

## What's next?

- **Increase funding for services** to address social determinants of health specific to cisgender women with HIV.
- Provide **support to HIV clinics and social services organizations** for programs that narrow the gap in unmet needs related to HIV care.
- **Increase state-level data reporting of unmet need related to HIV care** and ancillary support services among **cisgender women**.

