

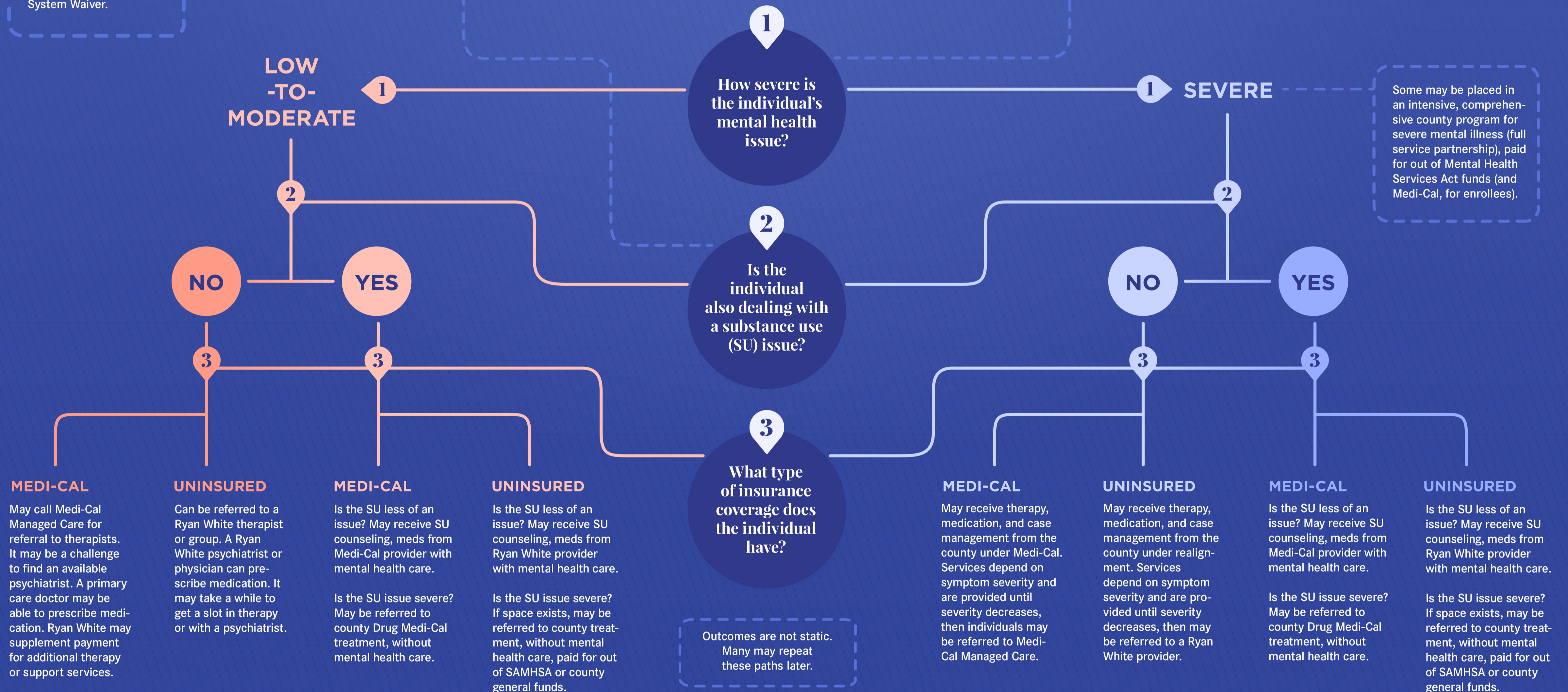
Navigating Behavioral Healthcare

FOR LOW-INCOME CALIFORNIANS LIVING WITH HIV

These are pathways a low-income PLHIV might follow to try to address behavioral health issues, as described in data gathered in 2015-16. We show here only some of the most common outcomes, as we understand them, but many individuals may have a different, more complex experience.

Drug Medi-Cal services may soon look different under the implementation of an Organized Delivery System Waiver.

Many individuals may move between lower and higher severity.



Funding stream glossary

MEDI-CAL

California's Medicaid program, insuring healthcare for low-income residents. Since passage of the Affordable Care Act, many enrollees are in a Medi-Cal Managed Care plan. These plans are contracted with the state to provide medical care in specific counties, including mental health care for low-to-moderate needs. Counties also use a portion of Medi-Cal, called Medi-Cal Specialty Mental Health, to pay for county administered mental health care services for severe needs.

DRUG MEDI-CAL

A component of California's Medicaid program that pays for substance use services in certified settings. The services funded by Drug Medi-Cal may be rendered in different settings and by different providers than those rendered through a client's Medi-Cal managed care plan. The new Drug Medi-Cal Organized Delivery System Waiver will pilot new ways of creating more coordinated, integrated substance use treatment in participating counties.

REALIGNMENT

Portions of state sales tax and vehicle license fee revenue that are transferred to the counties to provide mental health services, including services for severe mental health needs among the uninsured.

RYAN WHITE HIV/AIDS PROGRAM

A federal program that provides support services and basic medical care—including mental health care—for uninsured or under insured individuals living with HIV.

MENTAL HEALTH SERVICES ACT (MHSA)

Funds deriving from a state tax on incomes over \$1 million. Revenue goes to counties to pay for mental health services, prevention efforts, and infrastructure.

SUBSTANCE ABUSE AND MENTAL HEALTH SERVICES ADMINISTRATOR (SAMHSA)

An administrative agency of the US Department of Health and Human Services that distributes grants to states, local governments, and individual organizations to support prevention and treatment of behavioral health issues.